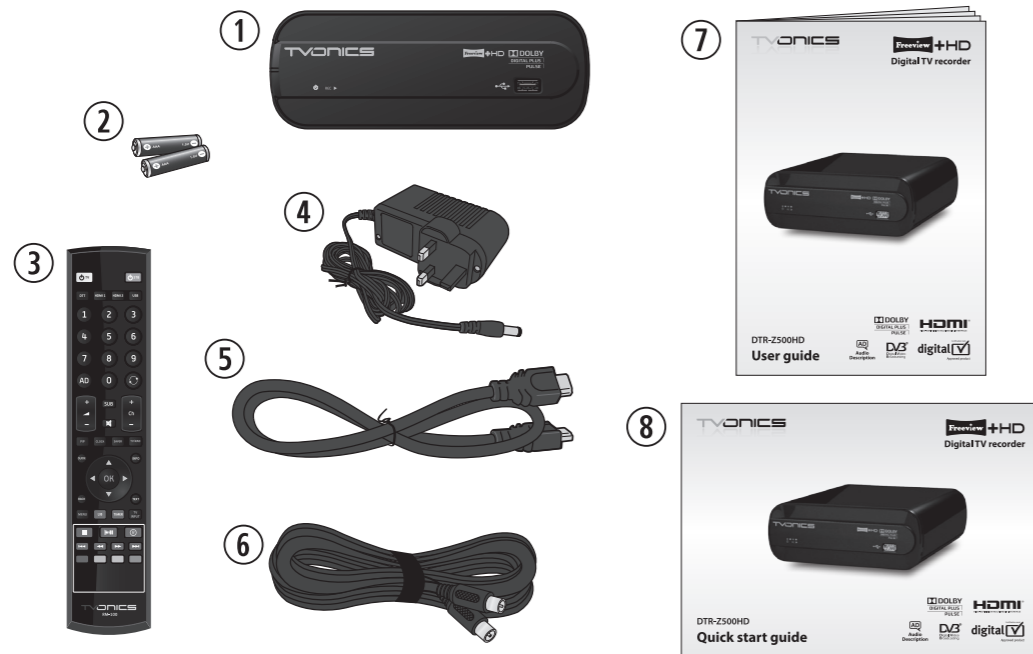




DTR-Z500HD  
Quick start guide



1 Package Contents



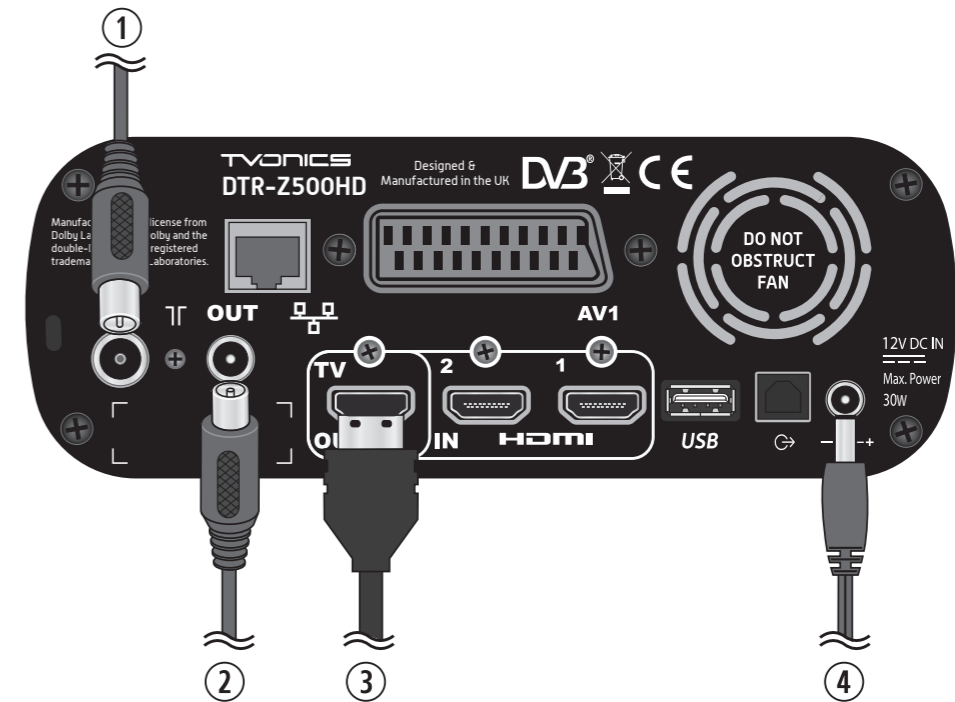
- ① Digital TV recorder (DTR)
- ② Batteries (2xAAA)
- ③ Remote control
- ④ AC mains adaptor
- ⑤ HDMI cable
- ⑥ RF cable
- ⑦ User guide
- ⑧ Quick start guide

2 Inserting the Batteries into the Remote Control



- Always check the positive/negative symbols on the batteries to ensure they are inserted correctly.
- Don't forget to get rid of old batteries safely. Check with your local council for how you should get rid of batteries. Never put batteries on a fire or in the bin with normal household waste.

3 Connecting Equipment to the Rear of the Recorder

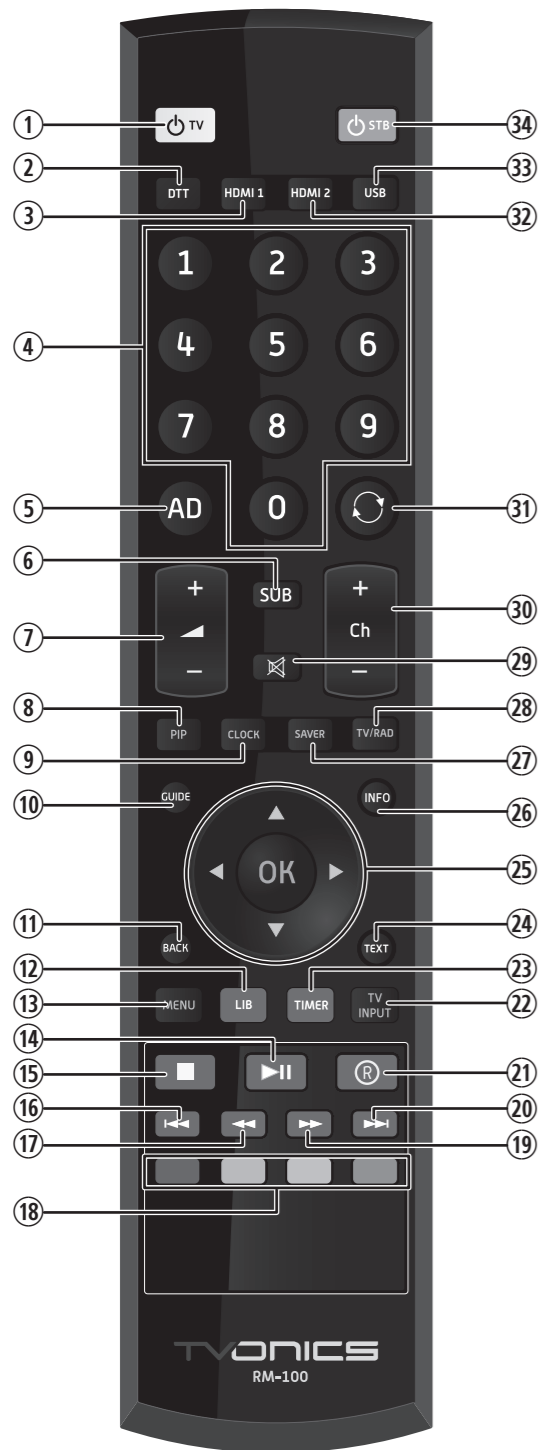


- ① Plug your aerial lead into the **RF IN** socket of the recorder.
- ② If required, plug the RF cable between the **RF OUT** socket of the recorder and your TV, Video or DVD recorder.
- ③ Plug the HDMI cable between the **HDMI OUT** socket of the recorder and your TV.
- ④ Plug the supplied AC mains adaptor between the power socket of the recorder and a standard wall socket. **Only switch on the wall socket when all cables have been attached.** (Do not cut off the supplied AC mains adaptor's plug.)

**Please refer to page 11 of the User Guide for information on connecting equipment using a HDMI cable, a SCART cable, a USB Flash drive or an audio system using a SPDIF cable.**

# 4

## Overview of the Remote Control



- ① **TV** - Switches the TV on/into Standby\*.
- ② **DTT** - Switches the viewing mode to DTT.
- ③ **HDMI 1** - Switches the viewing mode to HDMI 1.
- ④ **0-9** - Selects channels, enter PIN.
- ⑤ **AD** - Switches Audio Description on or off. Refer to page 14 for more information.
- ⑥ **SUB** - Displays subtitles (if available).
- ⑦ **▲/▼** - Adjusts the TV's volume\*.
- ⑧ **PIP** - Enters Picture In Picture mode. Refer to page 19 for more information.
- ⑨ **CLOCK** - Displays the clock.
- ⑩ **GUIDE** - Switches the Electronic Programme Guide (EPG) on/off. Refer to page 16 for more information.
- ⑪ **BACK** - Returns to the previous level in the menu. Exits EPG, Info and menu (first level).
- ⑫ **LIB** - Displays the Library of recorded programmes. Refer to page 27 for more information.
- ⑬ **MENU** - Displays/exits the menu.
- ⑭ **⏸** - Pauses and resumes live TV. Refer to page 23 for more information. Plays and pauses recordings in the Library.
- ⑮ **■** - Stops playback when viewing recordings. Stops recording.
- ⑯ **⏮** - Skips back 30 seconds when viewing a recording or watching live TV. Press and hold to skip to the start when viewing a recording or skip to the start of the pause buffer when watching live TV.
- ⑰ **⏪** - Rewinds live TV and recordings. Press repeatedly to increase the rewind speed.
- ⑱ **Coloured buttons** - Selects options in digital text/EPG/Channel List/menu.
- ⑲ **⏩** - Fast forwards recordings. Press repeatedly to increase the fast forward speed. When pausing live TV or recordings, press to watch in slow motion.
- ⑳ **⏭** - Skips forward 30 seconds when viewing a recording. Press and hold to skip to the end when viewing a recording.
- ㉑ **Ⓜ** - Records live TV. Sets highlighted programmes to timer record in the EPG.
- ㉒ **TV INPUT** - Switches between the available TV viewing modes (eg DTT, HDMI or AV).\*
- ㉓ **TIMER** - Displays the Timers screen. Refer to page 24 for more information.
- ㉔ **TEXT** - Displays digital text (if available).
- ㉕ **OK/▲/▼/◀/▶** - Displays the Channel List/confirms a selection (**OK** button). Navigate the EPG/menu/Channel List/Info menu (**▲/▼/◀/▶** buttons).
- ㉖ **INFO** - Displays programme and recording information. Refer to page 18 for more information.
- ㉗ **SAVER** - Displays the screen saver.
- ㉘ **TV/RAD** - Switches between Digital TV channels and Digital Radio channels.
- ㉙ **🔊** - Turns the TV's sound on/off\*.
- ㉚ **Ch. +/-** - Selects the next/previous channel.
- ㉛ **⏴** - Returns to the previous channel watched. Switches between 4 and 24 hours advance in EPG.
- ㉜ **HDMI 2** - Switches the viewing mode to HDMI 2.
- ㉝ **USB** - Switches the viewing mode to USB.
- ㉞ **STB** - Switches the Digital TV recorder on/into Standby.

\*Once the remote control has been programmed to operate your equipment. Refer to page 37 of the User Guide for more information.

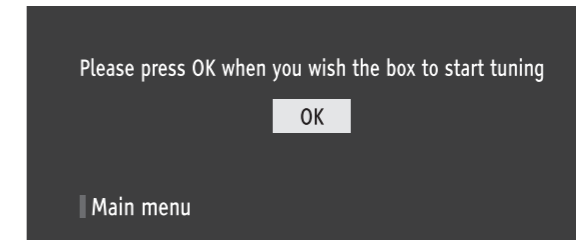
# 5

## Automatic Tuning

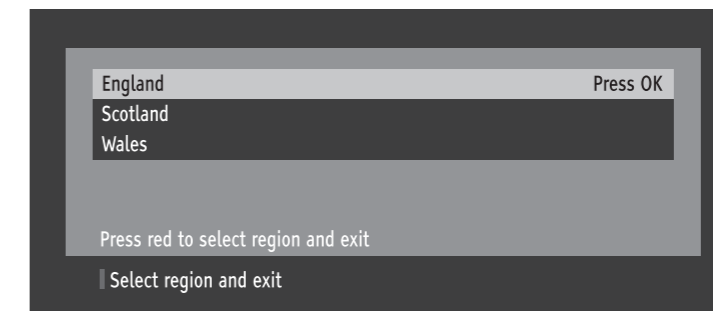
1. Ensure the aerial is plugged into this unit.
2. Once the unit has powered up for the first time, the following menu is displayed. Press the **[OK]** button to continue.

### Note:

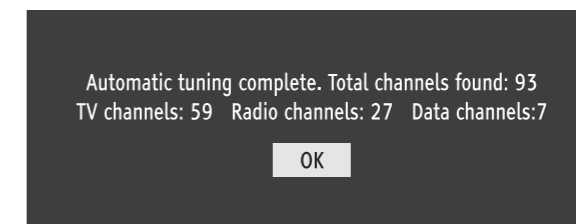
- On initial startup there is also an option available to access advanced setup by pressing the **[RED]** button before tuning starts. Press the **[BACK]** button to return to the tuning screen.



3. The Digital TV recorder will now scan and store all available channels. Depending on the quality of your reception, this may take several minutes. Please be patient and do not press any buttons.
  - 💡 If no channels are found, a message is displayed asking you to check your aerial. Confirm that your aerial is connected correctly and press the **[OK]** button to restart automatically tuning.
4. Once automatic tuning has finished, you may see a region preference screen similar to the one shown below. Select the region that is best for your area by pressing the **[RED]** button, or to get further regions press the **[OK]** button (if available).



5. A summary screen, like the one below, is shown. Press the **[OK]** button to exit the automatic tuning process.



**Congratulations ! The Digital TV recorder is now ready to use.**

# 6

## Register your Product

Visit **TVONICS.COM**  
to register your product for its 12-month guarantee.